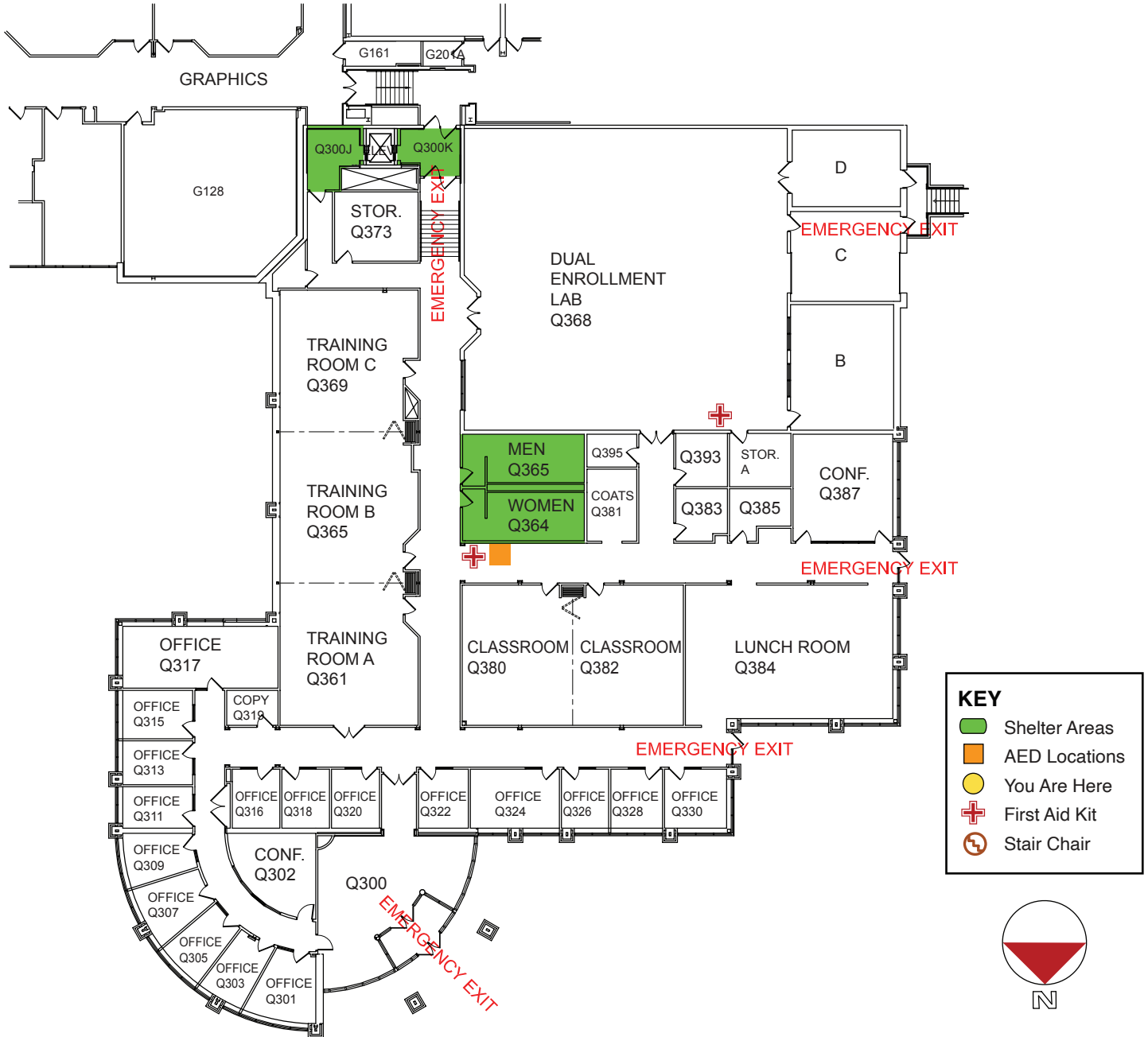


Emergency Evacuation Map

In an Emergency call 911 for Police, Fire and Medical Assistance



KEY

- Shelter Areas
- AED Locations
- You Are Here
- + First Aid Kit
- Stair Chair



FOR SEVERE WEATHER
PROCEED TO THE LOWEST
LEVEL OF THE BUILDING

Q BUILDING
EVACUATION STAGING AREA:
Light Post #12

Q BUILDING



WAUKESHA
COUNTY TECHNICAL
COLLEGE