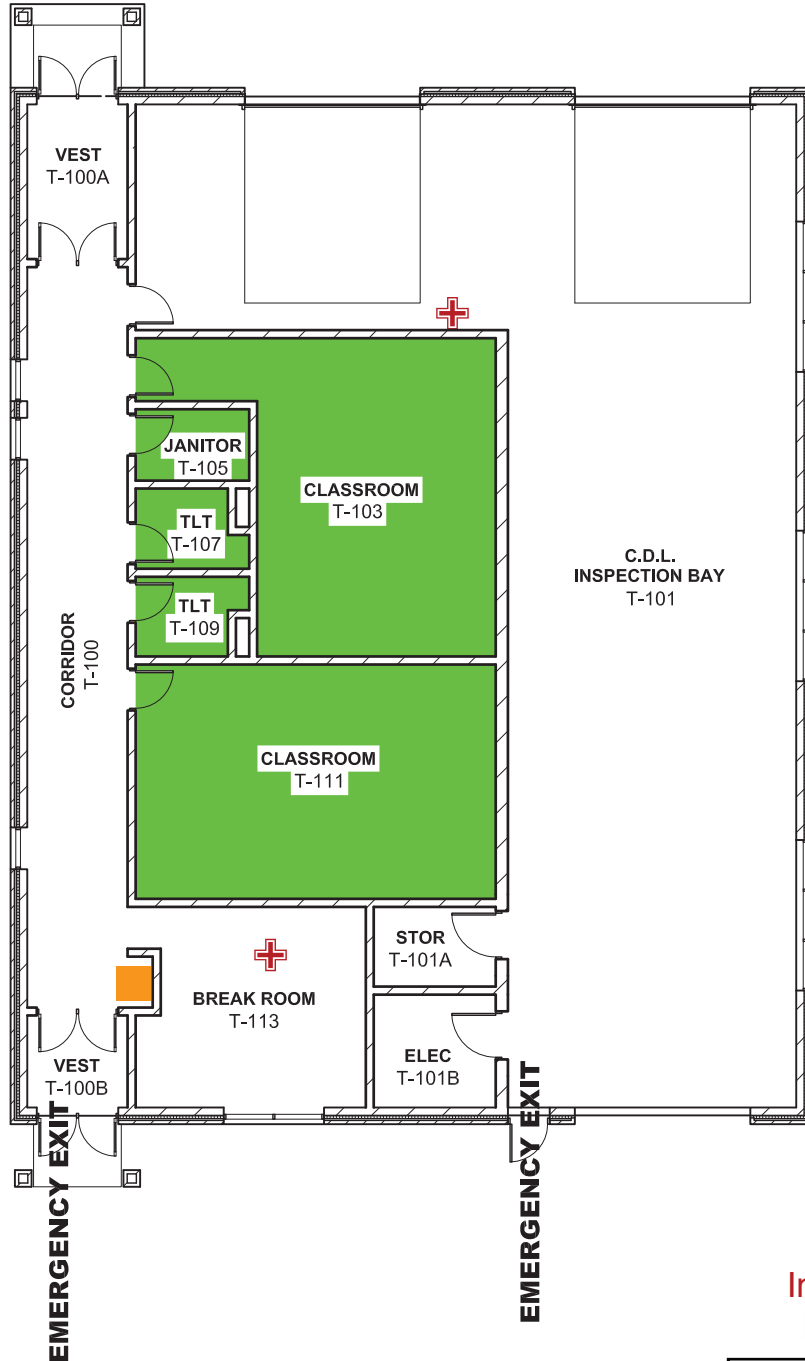


Emergency Evacuation Map

In an Emergency call 911 for Police, Fire and Medical Assistance

EMERGENCY EXIT



KEY

- Shelter Areas
- AED Locations
- You Are Here
- First Aid Kit
- Stair Chair



In case of fire use stairs
DO NOT use elevators

T BUILDING
EVACUATION STAGING AREA:
Light Post #24

FIRST FLOOR

BUILDING T TRANSPORTATION



WAUKESHA
COUNTY TECHNICAL
COLLEGE