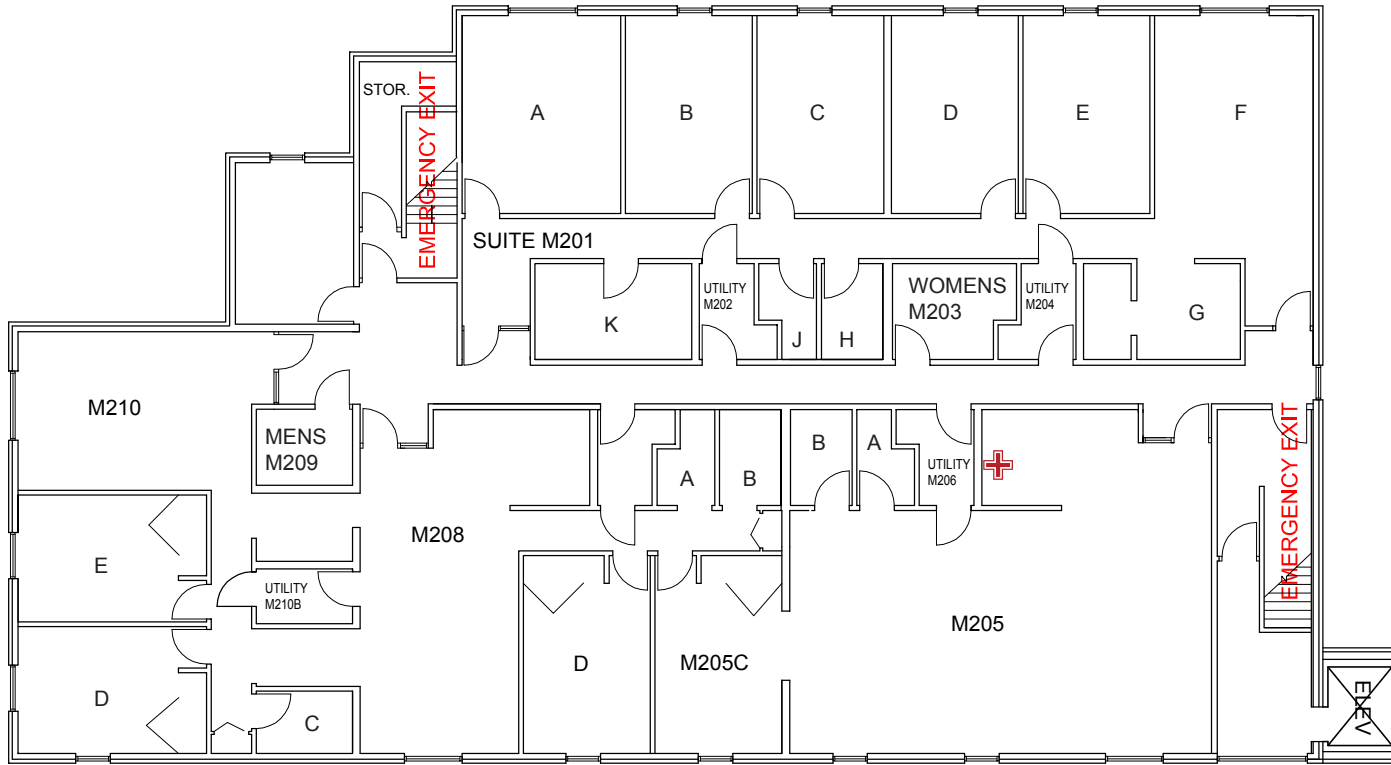







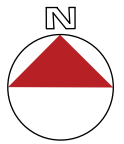
Emergency Evacuation Map

In an Emergency call 911 for Police, Fire and Medical Assistance



KEY

-  Shelter Areas
-  AED Locations
-  You Are Here
-  First Aid Kit
-  Stair Chair



**FOR SEVERE WEATHER
PROCEED TO THE LOWEST
LEVEL OF THE BUILDING**

In case of fire use stairs
DO NOT use elevators

**MORRIS STREET
EVACUATION STAGING AREA:
Main sidewalk by Morris Street**

SECOND FLOOR
MORRIS STREET