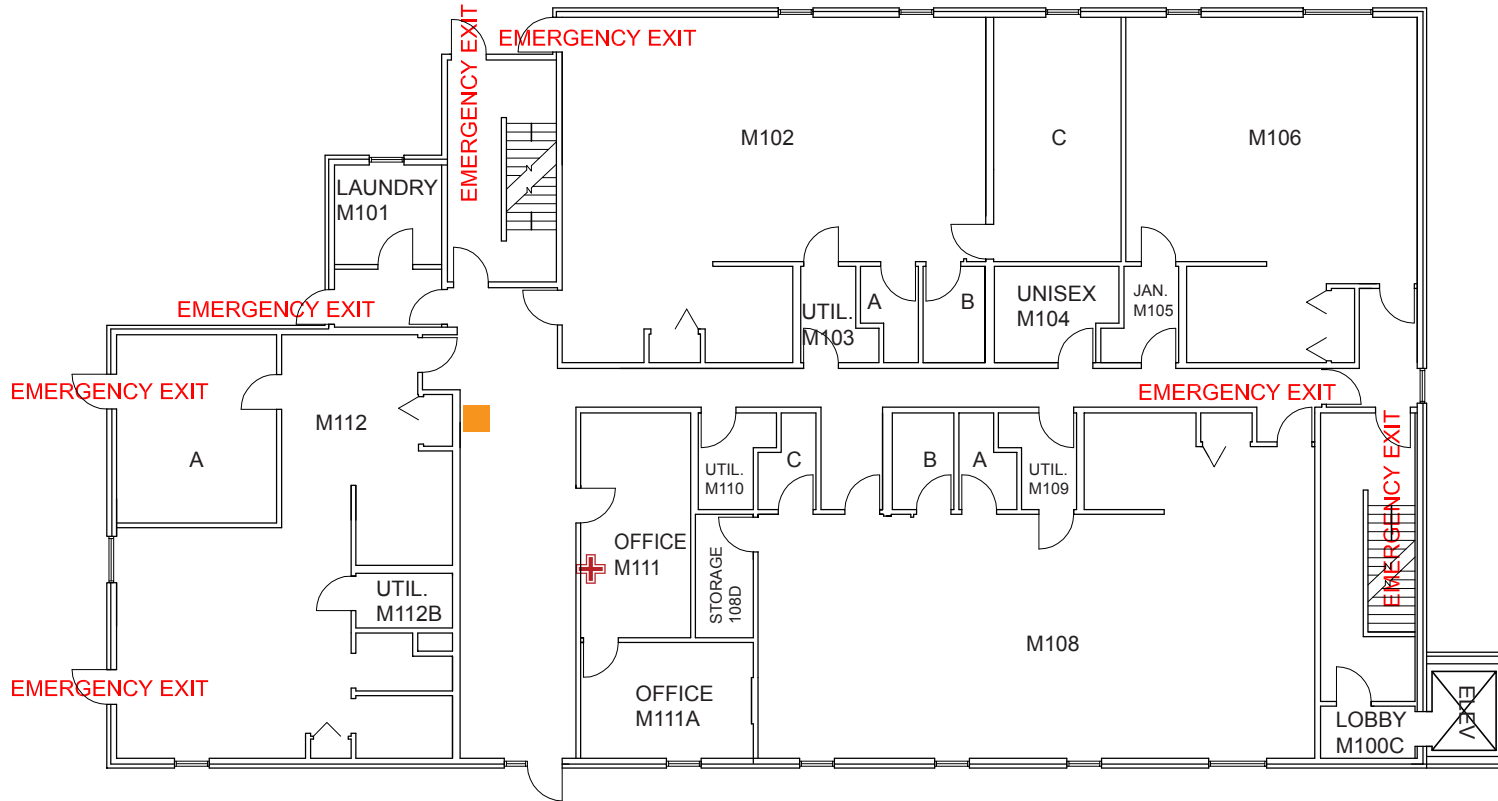
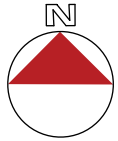


Emergency Evacuation Map

In an Emergency call 911 for Police, Fire and Medical Assistance



KEY	
	Shelter Areas
	AED Locations
	You Are Here
	First Aid Kit
	Stair Chair



**FOR SEVERE WEATHER
PROCEED TO THE LOWEST
LEVEL OF THE BUILDING**

In case of fire use stairs
DO NOT use elevators

**MORRIS STREET
EVACUATION STAGING AREA:
Main sidewalk by Morris Street**

FIRST FLOOR

MORRIS STREET



WAUKESHA
COUNTY TECHNICAL
COLLEGE