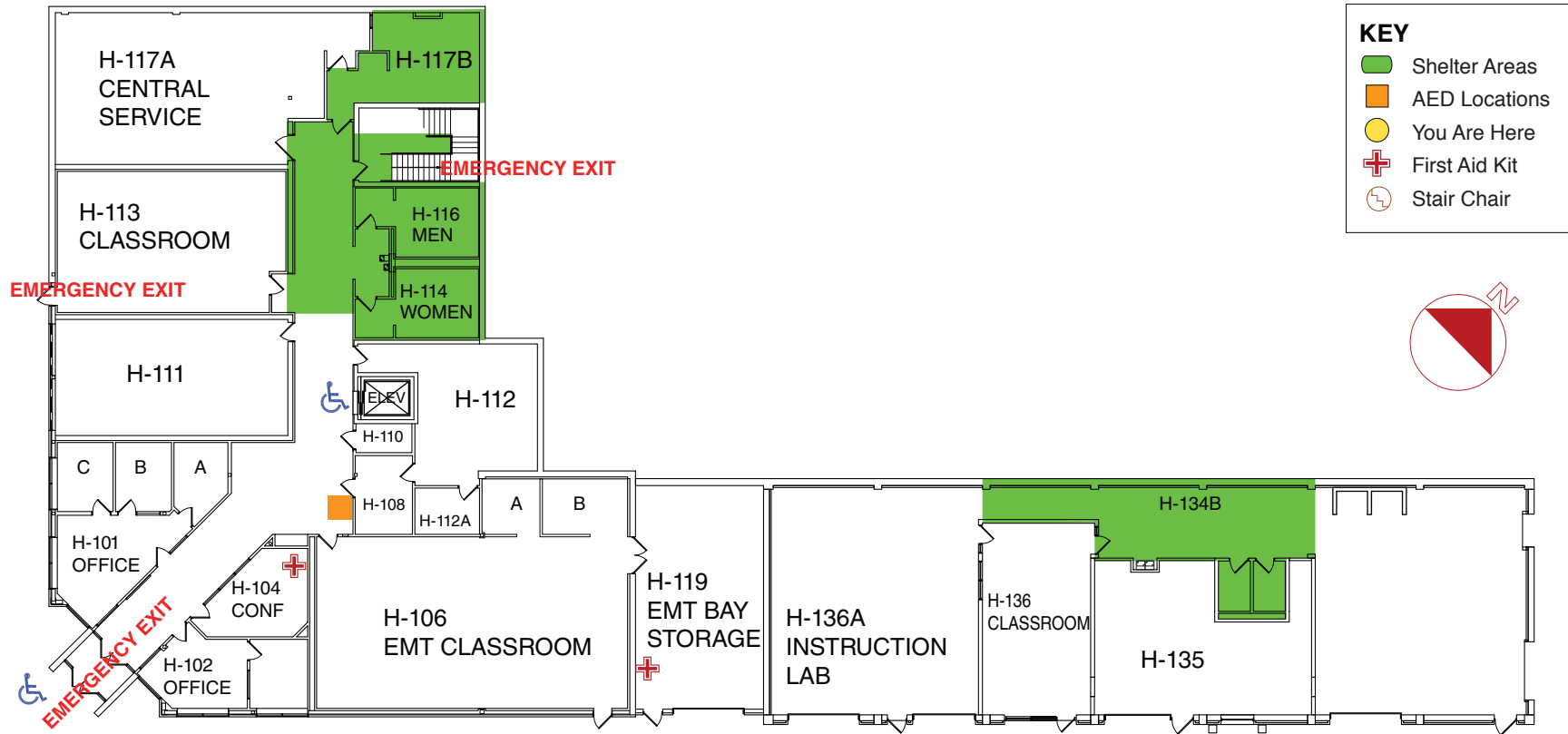


Emergency Evacuation Map

In an Emergency call 911 for Police, Fire and Medical Assistance



KEY	
	Shelter Areas
	AED Locations
	You Are Here
	First Aid Kit
	Stair Chair



In case of fire use stairs
DO NOT use elevators

<p>H BUILDING EVACUATION STAGING AREA: Light Post #13</p>

FIRST FLOOR

BUILDING H