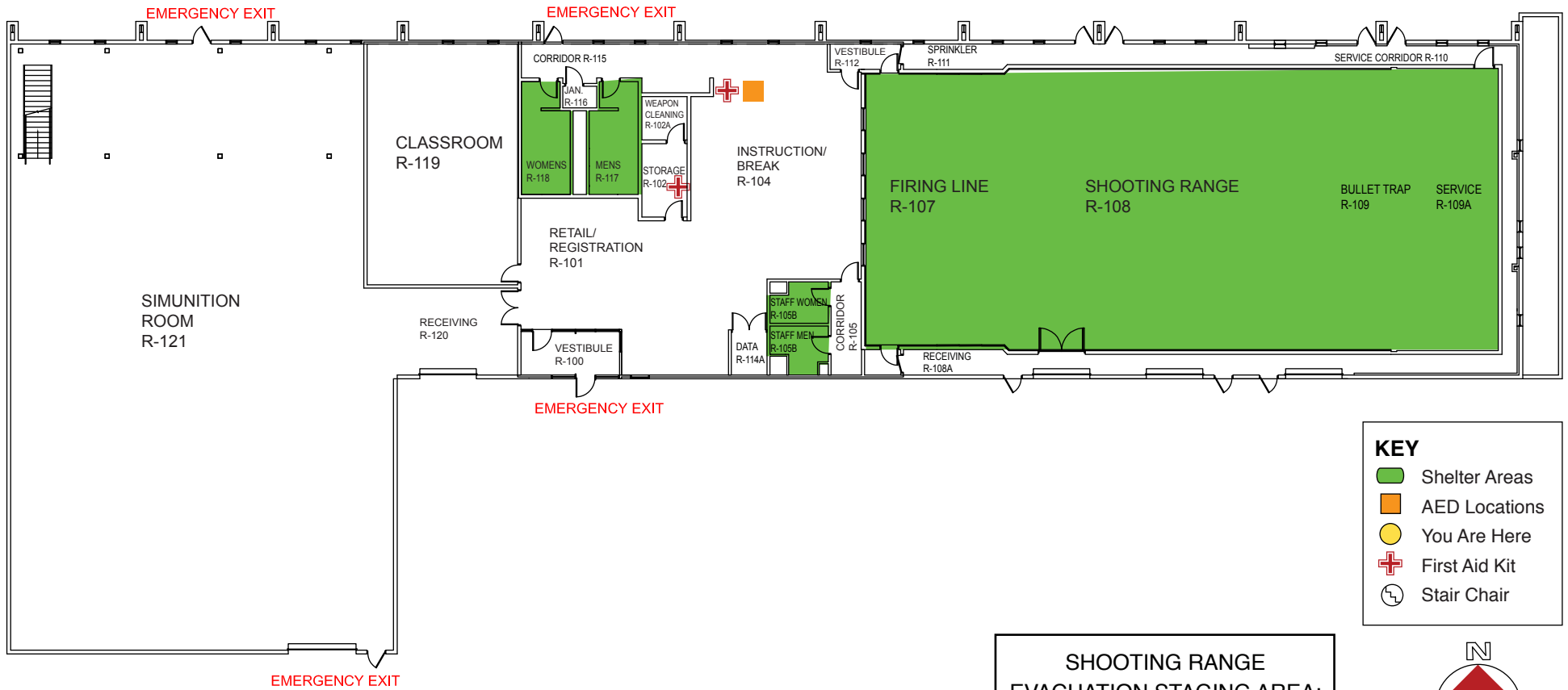







Emergency Evacuation Map

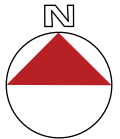
In an Emergency call 911 for Police, Fire and Medical Assistance



KEY

-  Shelter Areas
-  AED Locations
-  You Are Here
-  First Aid Kit
-  Stair Chair

SHOOTING RANGE
EVACUATION STAGING AREA:
Light Post #23



FIRST FLOOR

SHOOTING RANGE



WAUKESHA
COUNTY TECHNICAL
COLLEGE