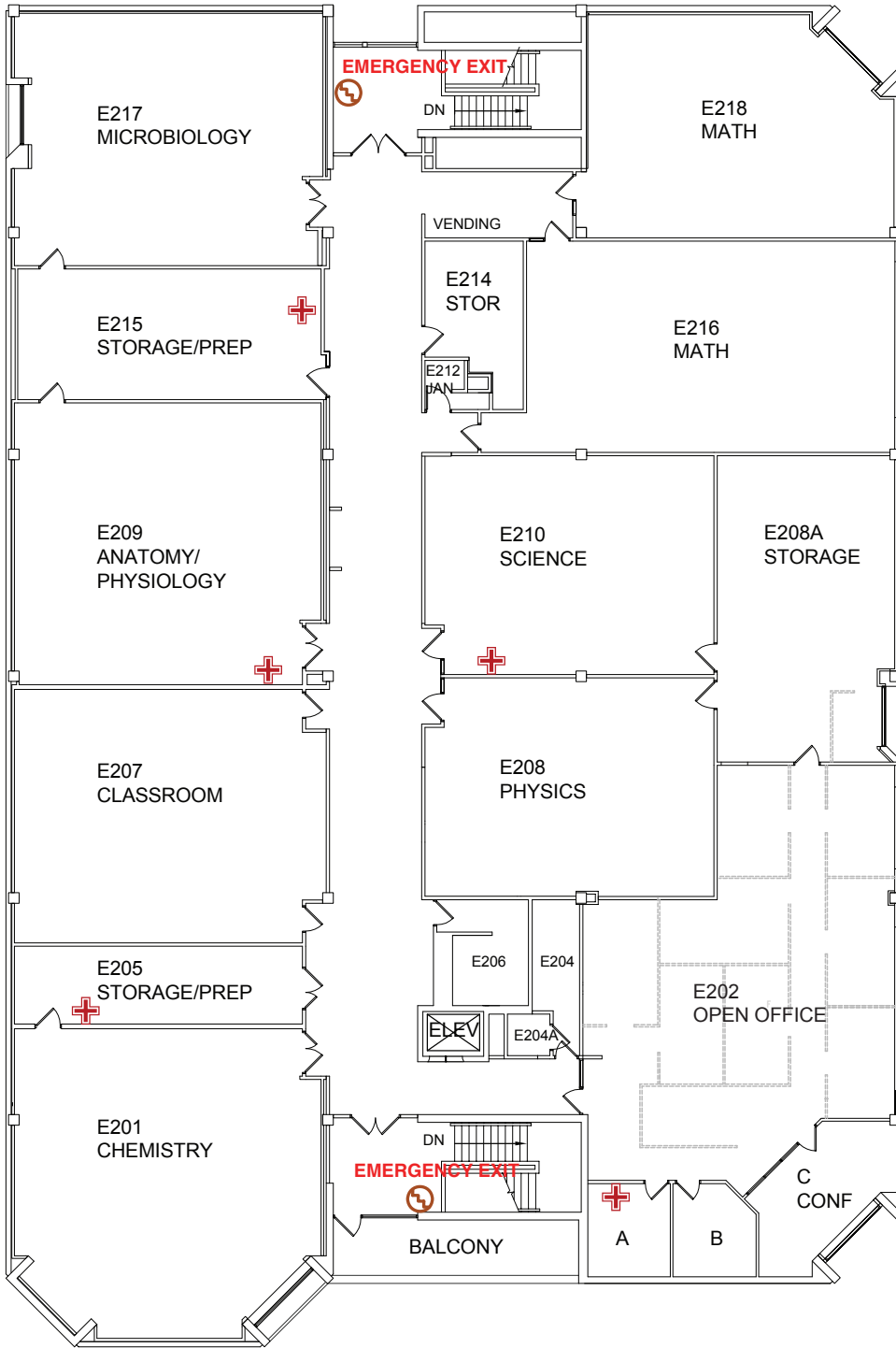


Emergency Evacuation Map

In an Emergency call 911 for Police, Fire and Medical Assistance



KEY

- Shelter Areas
- AED Locations
- You Are Here
- First Aid Kit
- Stair Chair



**E BUILDING
EVACUATION STAGING AREA:
Light Post #1**

**FOR SEVERE WEATHER
PROCEED TO THE LOWEST
LEVEL OF THE BUILDING**

SECOND FLOOR
BUILDING E



**WAUKESHA
COUNTY TECHNICAL
COLLEGE**