






# Emergency Evacuation Map

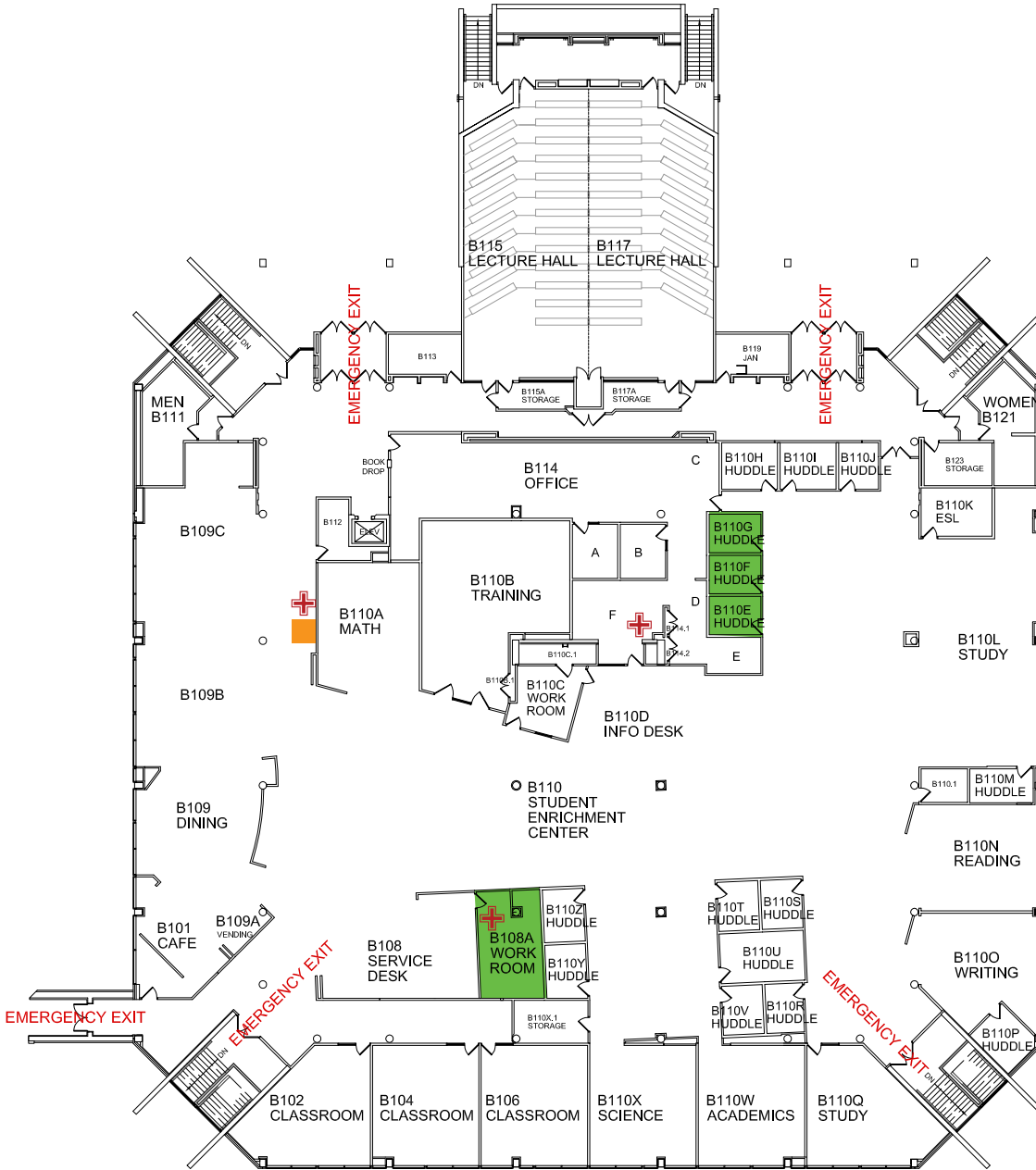
In an Emergency call 911 for Police, Fire and Medical Assistance

**KEY**

-  Shelter Areas
-  AED Locations
-  You Are Here
-  First Aid Kit
-  Stair Chair



**FOR SEVERE WEATHER  
PROCEED TO THE LOWEST  
LEVEL OF THE BUILDING**



In case of fire use stairs  
DO NOT use elevators

**B BUILDING  
EVACUATION STAGING AREA:  
Light Post #5**

UPPER FLOOR

# BUILDING B



WAUKESHA  
COUNTY TECHNICAL  
COLLEGE