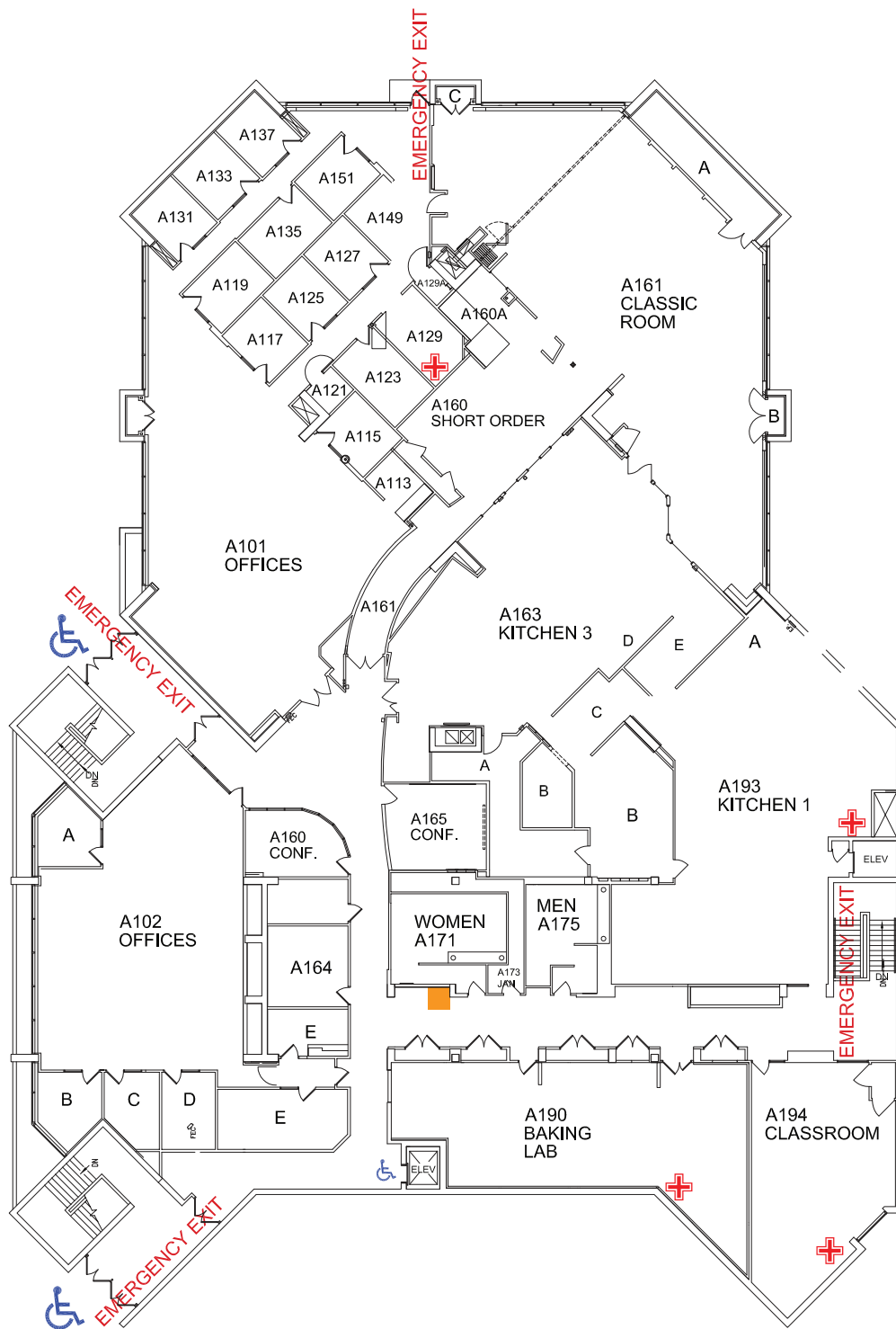







# Emergency Evacuation Map

In an Emergency call 911 for Police, Fire and Medical Assistance



FOR SEVERE WEATHER  
PROCEED TO THE LOWEST  
LEVEL OF THE BUILDING

- KEY**
-  Shelter Areas
  -  AED Locations
  -  You Are Here
  -  First Aid Kit
  -  Stair Chair



A BUILDING  
EVACUATION STAGING AREA:  
Light Post #1

FIRST FLOOR

# BUILDING A



WAUKESHA  
COUNTY TECHNICAL  
COLLEGE