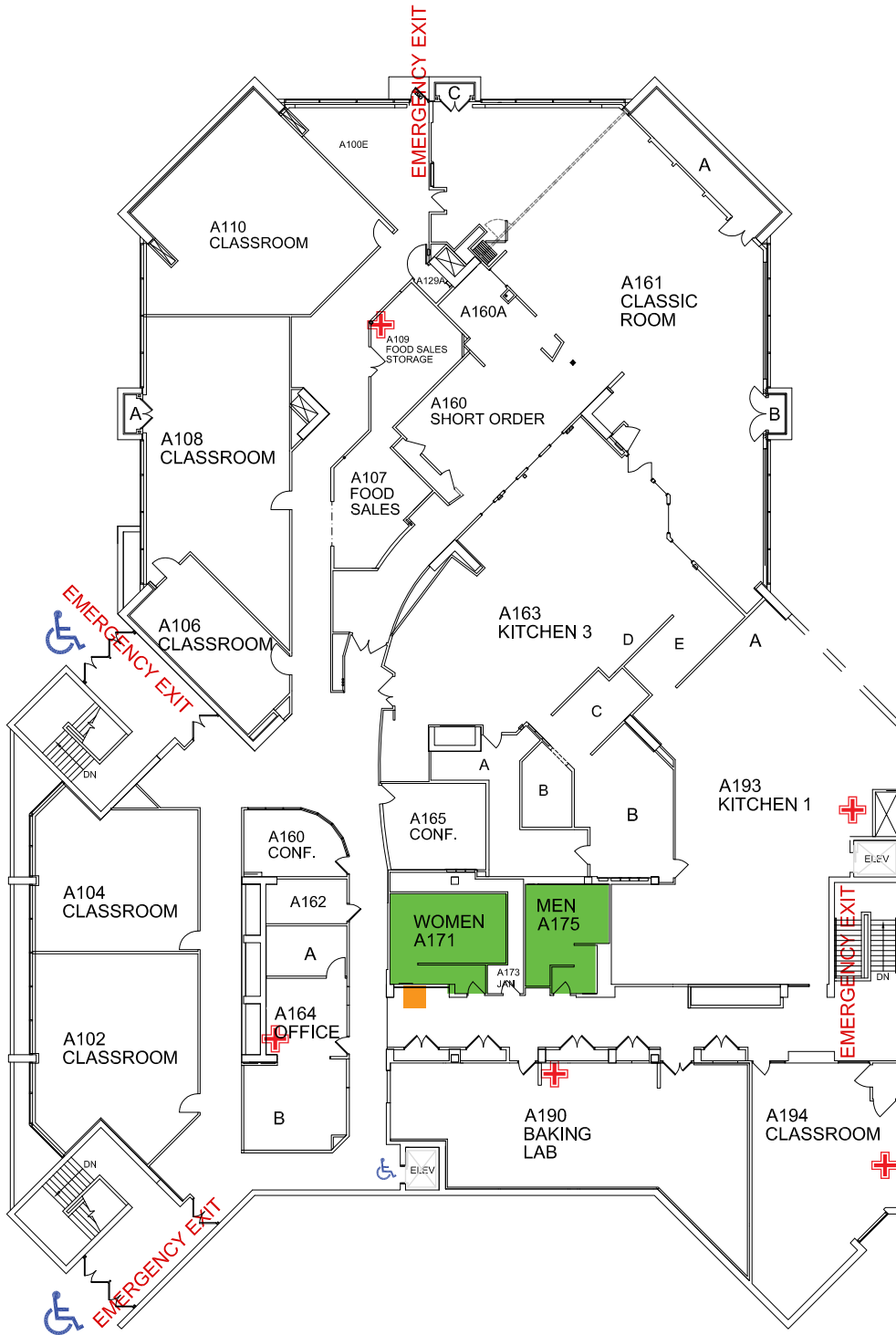


Emergency Evacuation Map

In an Emergency call 911 for Police, Fire and Medical Assistance



FOR SEVERE WEATHER
PROCEED TO THE LOWEST
LEVEL OF THE BUILDING

KEY

- Shelter Areas
- AED Locations
- You Are Here
- First Aid Kit
- Stair Chair



A BUILDING
EVACUATION STAGING AREA:
Light Post #1

FIRST FLOOR **BUILDING A**



WAUKESHA
COUNTY TECHNICAL
COLLEGE