



DUAL ENROLLMENT ACADEMY for high school students



EARLY CHILDHOOD EDUCATION PRESCHOOL

24-credit Technical Diploma

Explore the foundations of early childhood education and learn skills to support the education, healthy growth and development of preschool-aged children. Credits from this technical diploma transfer into WCTC's nationally-accredited Early Childhood Education associate degree program, so you can easily continue on the pathway to a rewarding career.

Courses include five theory and skills courses, and two practicum experiences in an early care and education preschool setting. Graduate candidates present a final portfolio to a Registry Commission for evaluation before being awarded the Preschool Credential.

Early Childhood Education Preschool Courses

Fall Semester

	Credits
307-148 ECE Foundations of ECE	3
307-160 ECE Field Experience 1	3
307-167 Health, Safety and Nutrition	3
307-179 Child Development	3

Spring Semester

	Credits
307-108 Early Language and Literacy	3
307-110 Social Science, Art, and Music	3
307-170 Field Experience 2	3
307-188 Guiding Child Behavior	3

DEA Students Earn

- Early Childhood Education Preschool Technical Diploma
- Preschool Credential from The Registry

Continue on your educational pathway using your DEA credits at WCTC.

Equal Opportunity Affirmative Action Employer/Educator

WCTC'S DUAL ENROLLMENT ACADEMY (DEA) is designed to give high school students a jump start in high-demand occupations, awarding participants with a WCTC credential(s) upon successful completion along with earning high school credits. High school students will spend the majority of their school day, both the fall and spring semesters, at WCTC participating in DEA.

Prospective students should have a strong interest in pursuing a career in their chosen program option. Students must be in good academic standing with a minimum 2.0 high school GPA and also meet the WCTC program requirements. Parental and high school approval is required for a student to be accepted into the program.

Next Steps

1. Meet with your High School Counselor/Dual Enrollment Coordinator to see if you qualify for WCTC DEA.
2. Attend a Dual Enrollment Informational Session at WCTC.
3. Complete a WCTC Dual Enrollment Academy Application and submit it to your High School Counselor/Dual Enrollment Representative for approval prior to the posted deadline.

www.wctc.edu/dual-enroll



WAUKESHA
COUNTY TECHNICAL
COLLEGE



800 Main Street, Pewaukee, Wisconsin 53072

Questions? Contact the Dual Enrollment Academy Coordinator, at 262.691.5557 or DEA@wctc.edu

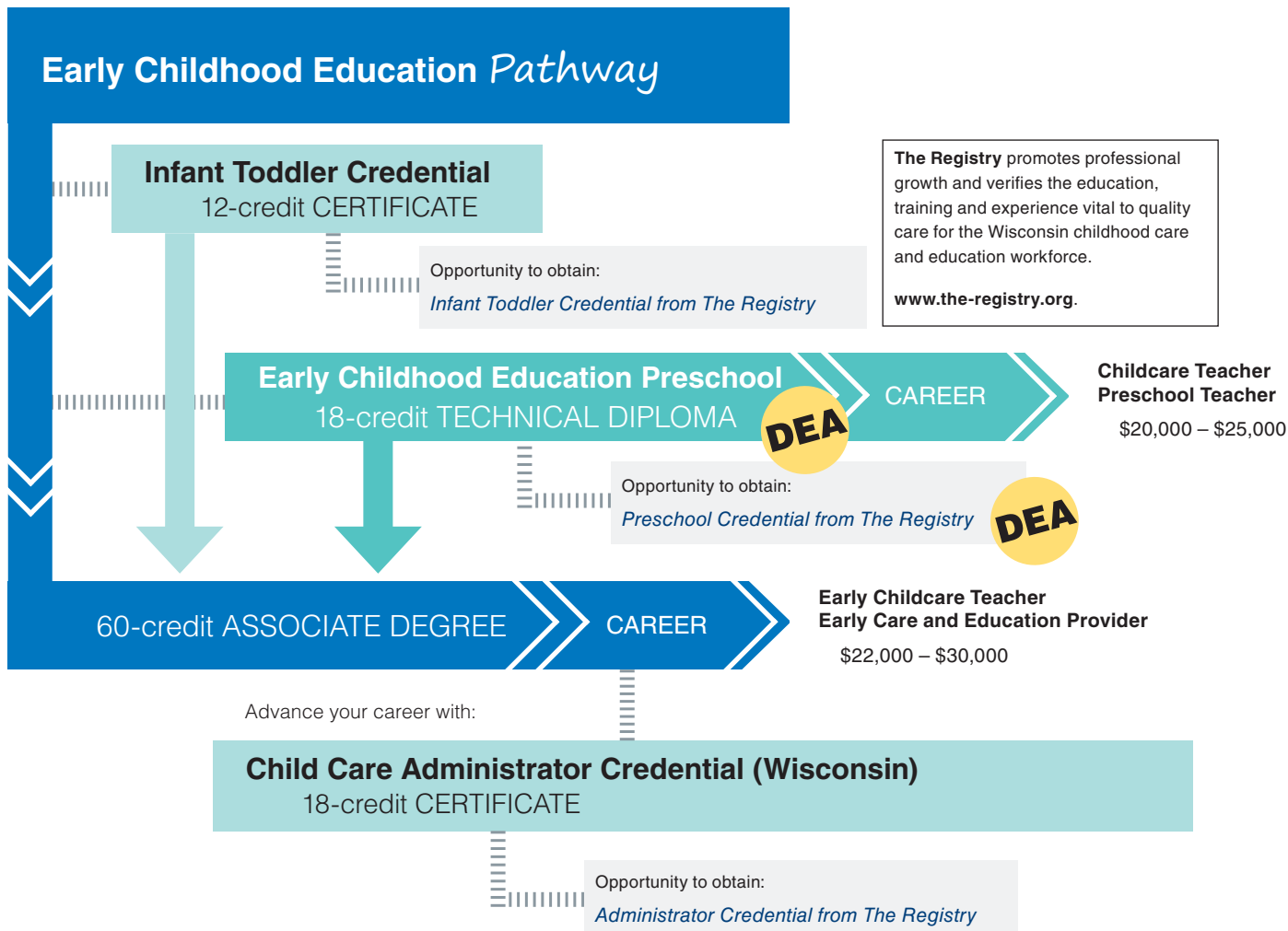
Early Childhood Education

www.wctc.edu/early-edu

Pathway

Discuss your pathway with an advisor. Call 262.691.5400 for an appointment.

Earn certificates, technical diplomas and/or industry credentials along this pathway. Start with some courses for entry-level employment, and continue with additional courses for higher wages and job advancement.



Continue on your educational pathway to a bachelor's degree!

WCTC has many transfer agreements in place to make the process seamless.

To qualify for most federal and state financial aid, a student must be enrolled in a technical diploma or associate degree program.

Salary range estimates based on wages for related occupations in Waukesha County as reported by Economic Modeling Specialists International (EMSI). Individual wages may vary based on experience, industry, location and specific job requirements.

WCTC prohibits discrimination or harassment based on any status protected by applicable state or federal law.



WAUKESHA
COUNTY TECHNICAL
COLLEGE

Hands-on Higher Ed